

DHUMAT 630 T4 4kW F400 (245630181)

GENERAL DATA



SMOKE EXTRACTION BACKWARD CASING FAN 400°C/2h

MANUFACTURING FEATURES

CASING:

- Made of galvanized steel sheet with connection flanges and inspection door.
- Changeable panels.

MOTOR SUPPORT:

- Galvanised steel plate, motor with flanges fixed on 2 supports. Removable plate / support / impeller set.

IMPELLER:

- Backward centrifugal impeller, made of galvanised steel, dynamically balanced and self-cleaning.
- Direct drive on the motor shaft.

MOTOR:

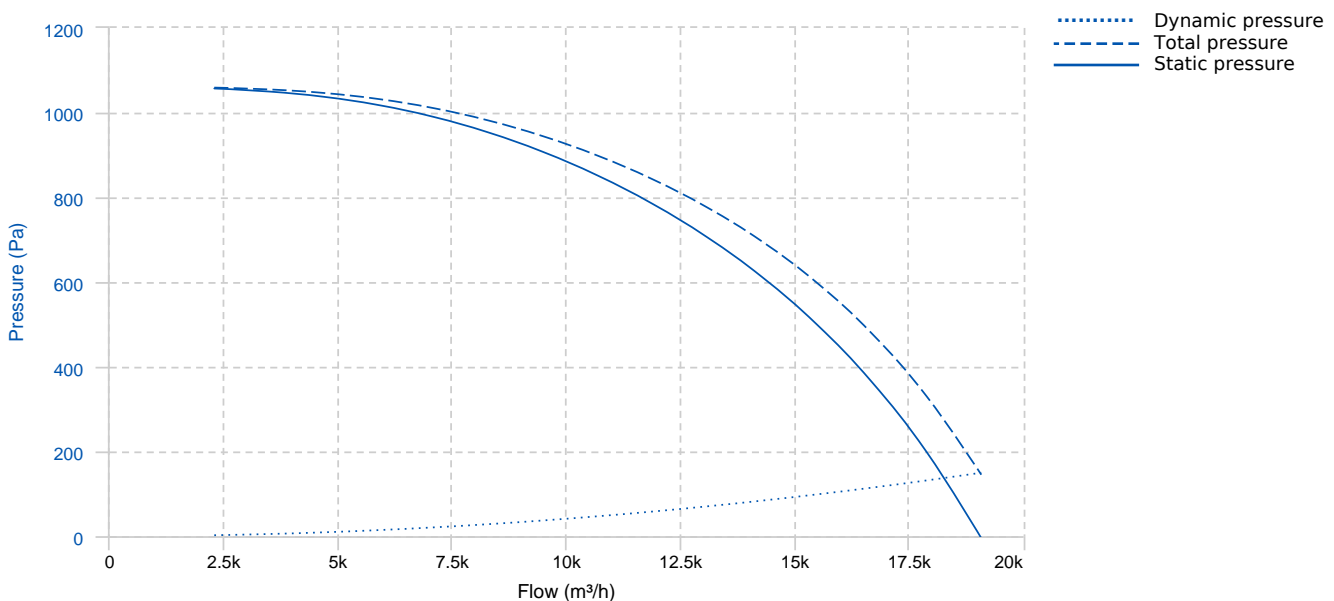
- Three phase motor with IP-55 protection and F class insulation. Manufactured with standard voltages for one speed motors: 230/400V 50Hz up to 4 Kw and 400/690V 50Hz for higher powers of 4 and 6 poles. 2 speed motors: Dahlander. 400V 50Hz

APPLICATIONS

- Smoke extraction in tertiary buildings IGH and ERP.
- Ventilation and smoke exhaust in covered car parks.
- Ventilation in technical, industrial or commercial facilities, kitchens.
- Maximum continuous working temperature: carried air 110°C, environment 60°C.

Official homologation by the European laboratory APPLUS according to EN 12101-3:2015 Certification Nr: 0370-CPR-2681

PERFORMANCE CURVE

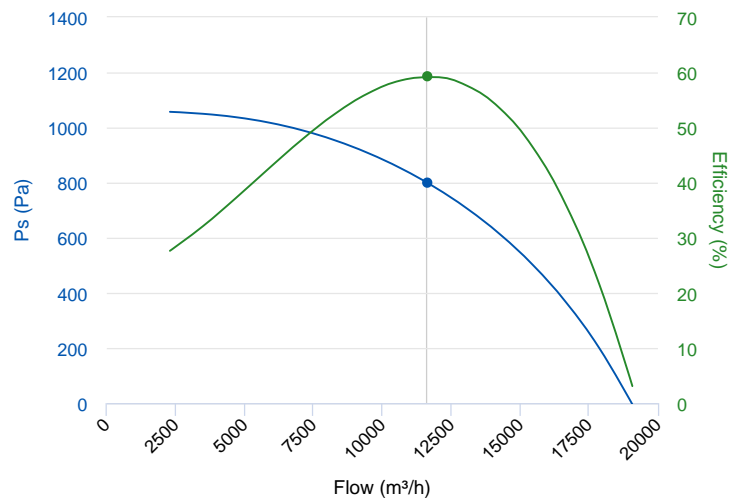


TECHNICAL DATA

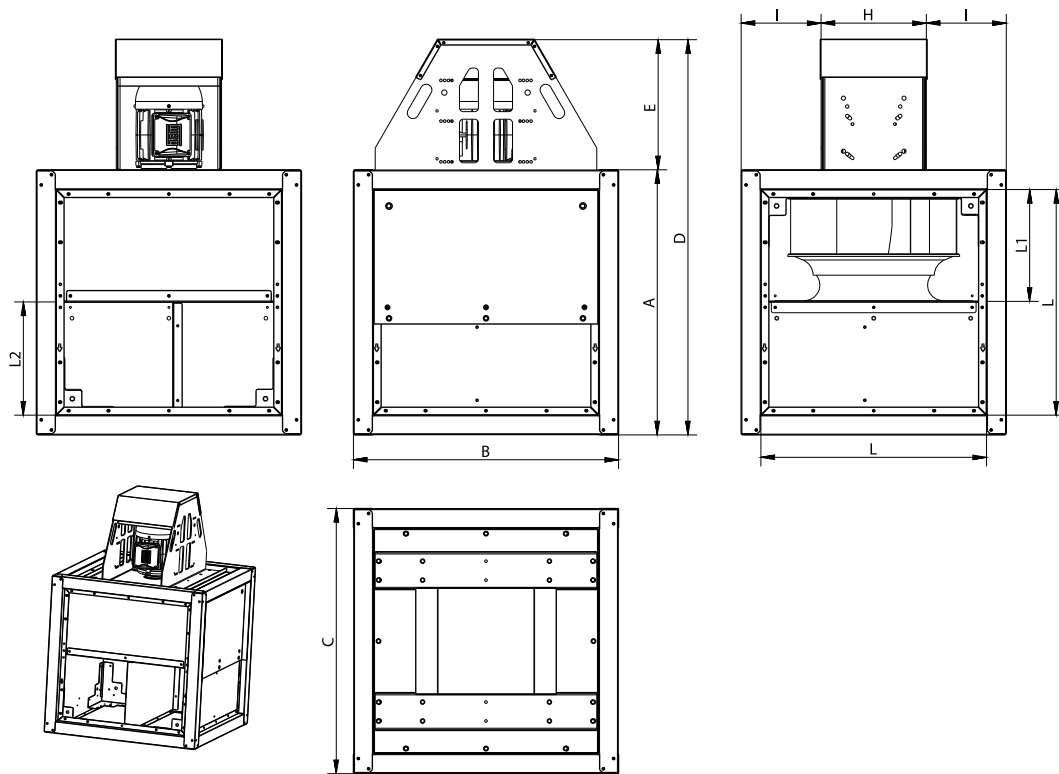
Fan							
RPM	1440	Approx. weight	246 kg	Max. Flow	19080 m ³ /h		
Motor							
Power	4 kW	RPM	1440	I max. (230V)	14,5 A	I max. (400V)	8,32 A
Size	112M	Approx. weight	35.8 kg	Efficiency (%)	86.6 %	FP	0.8

ERP DATA

Fan data sheet		
Fan type	Unit for non-residential ventilation (LOT 6)	
Typology	Unidirectional	
reports.other	None	
Type of driver	None	
Motor power (kW)	4	
	Fan values	ERP Requirements 2018
Max. efficiency (%)	59.19	51.49
Effic. Heat recovery (%)	-	
Pabs (kW)	4.624	
Flow (m ³ /h)	11637.73	
Static pressure (Pa)	799.29	
Speed (m/s)	9.64	
SFP (W/m ³ /s)	1430.29	



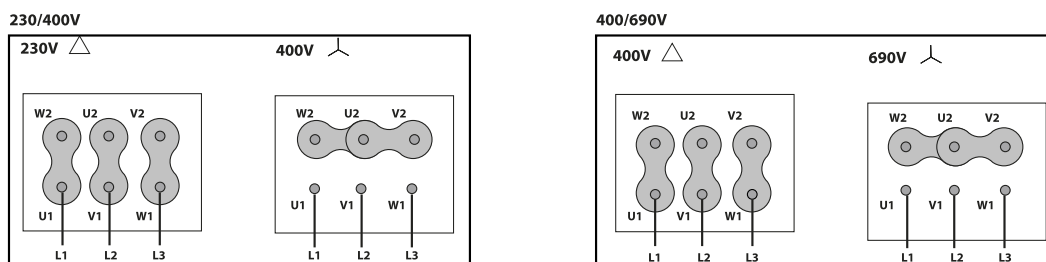
DIMENSIONS



Dimensions (mm)

A	1000	B	1000	C	1000	D	1376	E	376
H	340	I	330	K	26	L	895,7	L1	366,8
L2	527,4								

WIRING DIAGRAM



ACCESSORIES



**SAFETY SWITCH
INT 25 3P A**
REF: INT253PA



**SAFETY SWITCH FOR 400°C/2h
INT 400 25A 3P**
REF: 508902501



**OUTLET FLANGE FOR DHUMAT
EI DHUMAT 630**
REF: 965630111



**DHUMAT FEET KIT
DKF 630**
REF: 245639201



**OUTDOOR FLANGE WITH BIRD GUARD FOR
DHUMAT
VIS DHUMAT 630**
REF: 965560001



**FREQUENCY SPEED CONTROLLER
SFC 400 III 12A ***
REF: SFC400III12

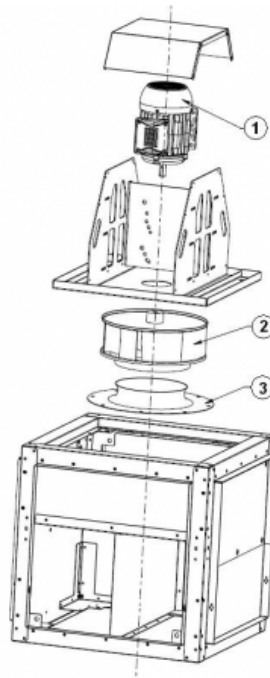


**ANTI-VIBRATION RUBBER BLOCK
AVR (GENERIC)**



**ANTI-VIBRATION SPRING BLOCK
AVS (GENERIC)**

SPARE PARTS



	Code	Model	Qty
1	721001174	MOTOR 4KW T4 B3 230/400V	x1
2	R-279639381	IMPELLER THRE R63B1 630X180x28 RD	x1
3	R-279631680	INLET CONE ED11 630	x1